

NowExam

Higher Quality , Better Service !



Q&A

<http://www.nowexam.com>

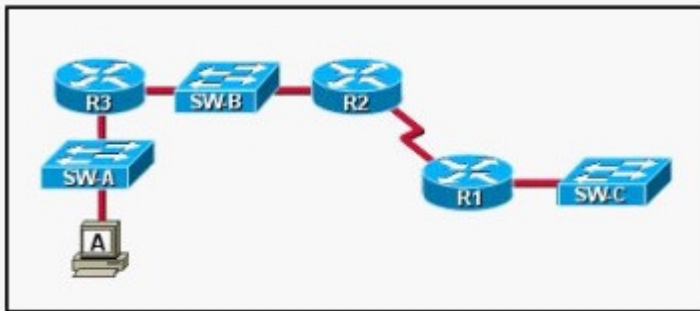
We offer free update service for one year.

Exam : **640-811**

Title : Interconnecting Cisco
Networking Devices

Version : DEMO

1.Refer to the exhibit. A network technician is troubleshooting a connectivity problem on R2. The technician enters the show cdp neighbors command at the R2 console. If the network is composed only of Cisco devices, for which devices should entries be displayed?



- A.R1
- B.SW-B and R1
- C.SW-B, R1, and SW-C
- D.R3, SW-B, R1, and SW-C
- E.SW-A, R3, SW-B, R1, and SW-C
- F.Host A, SW-A, R3, SW-B, R1, and SW-C

Correct:B

2.Refer to the exhibit. What can be determined from the output shown?

```
JaxSwitch1# show spanning-tree

VLAN0001
Spanning tree enabled protocol ieee
Root ID    Priority    32769
Address    000d.bdc3.37c0
Cost       19
Port       26 (FastEthernet0/2)
Hello Time 2 sec Max Age 20 sec Forward Delay 15 sec

Bridge ID  Priority    32769 (priority 32768 sys-id-ext 1)
Address    000d.bdc3.a340
Hello Time 2 sec Max Age 20 sec Forward Delay 15 sec
Agin Time 300
```

- A.The JaxSwitch1 switch is using VTP.
- B.This is the only switch in the LAN topology.
- C.The JaxSwitch1 switch is not the root switch.
- D.The link to the root bridge is through a 1 Gbps connection.
- E.Spanning Tree Protocol is disabled on the JaxSwitch1 switch.

Correct:C

3.What are the general recommendations regarding the placement of access control lists?

(Choose two.)

- A.Standard ACLs should be placed as close as possible to the source of traffic to be denied.
- B.Extended ACLs should be placed as close as possible to the source of traffic to be denied .
- C.Standard ACLs should be placed as close as possible to the destination of traffic to be denied .
- D.Extended ACLs should be placed as close as possible to the destination of traffic to be denied .

Correct:B C

4.Drag Drop

Drag the security features on the left to the specific security risks they help protect against on the right. (Not all options are used.)

access-group	remote access to device console
console password	access to the console 0 line
enable secret	access to connected networks or resources
CHAP authentication	viewing of passwords
VTY password	access to privileged mode
service password-encryption	

Correct:

Green choice5---->Yellow Choice1

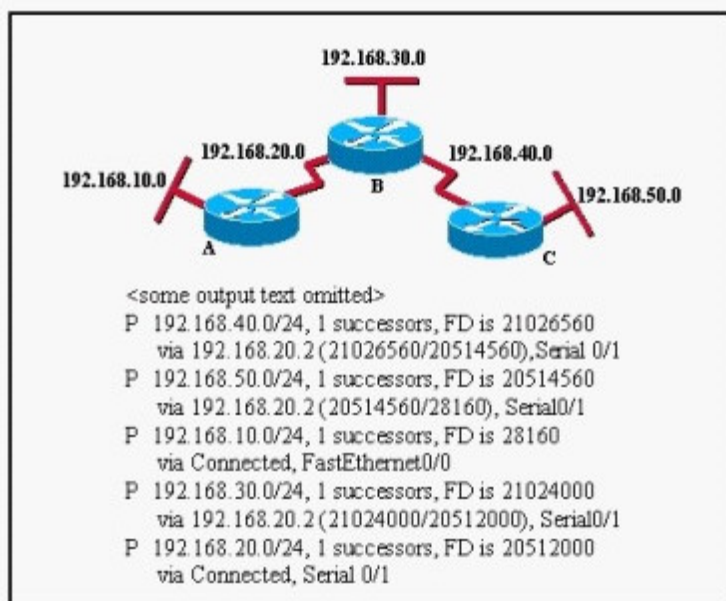
Green choice2---->Yellow Choice2

Green choice1---->Yellow Choice3

Green choice6---->Yellow Choice4

Green choice3---->Yellow Choice5

5.Refer to the graphic. Which of the following commands would create the output shown at the bottom of the graphic?



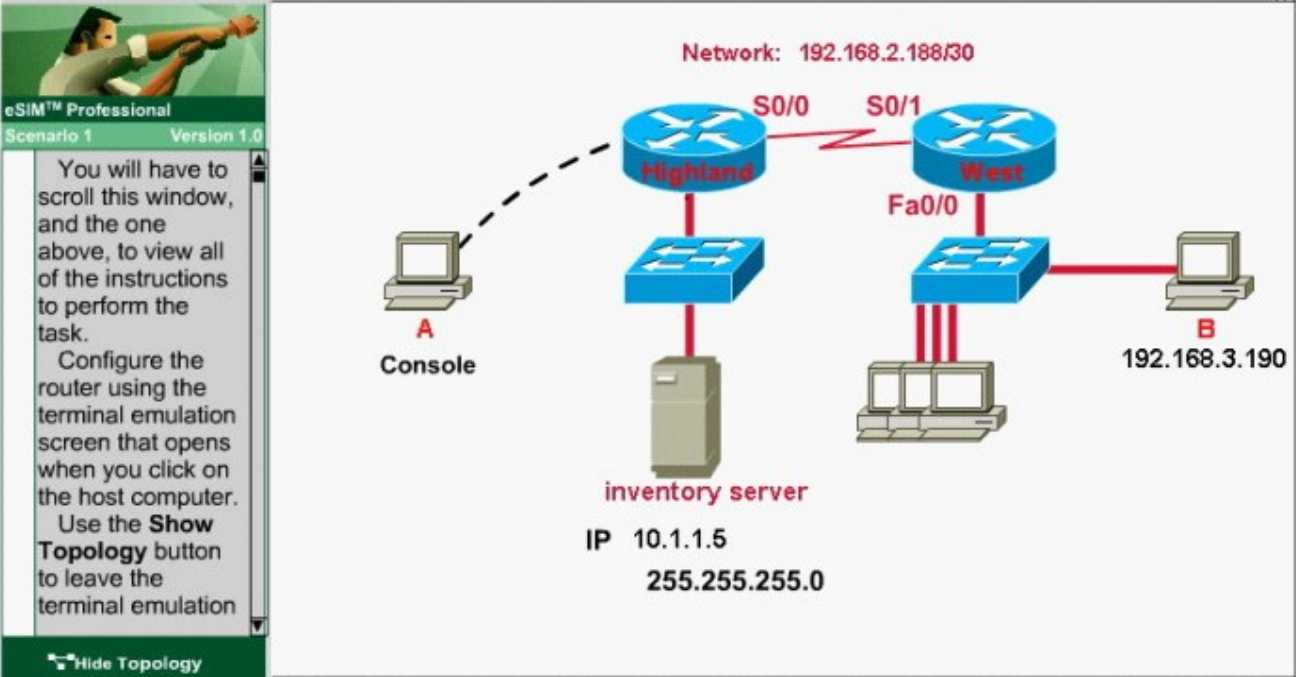
- A.Router# show ip eigrp topology
- B.Router# show ip route
- C.Router# show ip eigrp neighbors
- D.Router# show ip ospf route
- E.Router# show ip ospf database

Correct:A

6.LAB

The routers in the tire store network shown in the diagram have been partially configured. Your task is to complete the addressing configuration of the Highland router and the LAN interface configuration of the West router. Layer 3 connectivity should be established between the host B on the West router LAN and the inventory server attached to the Highland router. Use various router show commands to determine the correct configuration values that must be used. The only usable router console is attached to the Highland router. You can access host B to test your results.

Enable secret password on all routers: "cisco".
 Vty lines 0-4 password: "cisco".



Correct:

7. Drag Drop

Routing has been configured on the local router with these commands:

```
Local(config)# ip route 0.0.0.0 0.0.0.0 192.168.1.1
Local(config)# ip route 10.1.0.0 255.255.255.0 192.168.2.2
Local(config)# ip route 10.1.0.0 255.255.0.0 192.168.3.3
```

Drag each destination IP address on the left to its correct next hop address on the right.

- 10.1.1.10
- 10.1.0.14
- 10.2.1.3
- 10.1.4.6
- 10.1.0.123
- 10.6.8.4

Next hop 192.168.1.1	<input type="text"/>	<input type="text"/>
Next hop 192.168.2.2	<input type="text"/>	<input type="text"/>
Next hop 192.168.3.3	<input type="text"/>	<input type="text"/>

Correct:

Green choice1---->Yellow Choice5

Green choice2---->Yellow Choice3

Green choice3---->Yellow Choice1

Green choice4---->Yellow Choice6

Green choice5---->Yellow Choice4

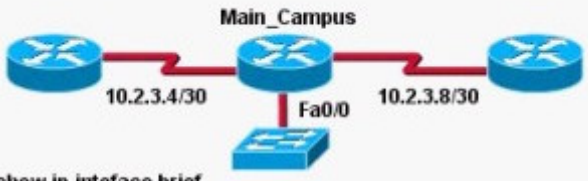
Green choice6---->Yellow Choice2

8.Which command is required for connectivity in a Frame Relay network if Inverse ARP is not operational?

- A.frame-relay arp
- B.frame-relay map
- C.frame-relay interface-dlci
- D.frame-relay lmi-type

Correct:B

9.Refer to the exhibit. What can be determined about the interfaces of the Main_Campus router from the output shown?



```

Main_Campus# show ip interface brief

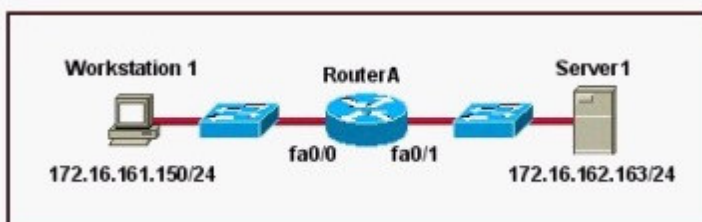
```

Interface	IP-Address	OK?	Method	Status	Protocol
FastEthernet0/0	unassigned	YES	unset	up	up
FastEthernet0/0.1	192.168.1.254	YES	manual	up	up
FastEthernet0/0.2	192.168.2.254	YES	manual	up	up
FastEthernet0/0.3	192.168.3.254	YES	manual	up	up
FastEthernet0/0.4	192.168.4.254	YES	manual	up	up
Serial0/0	10.2.3.5	YES	manual	up	up
Serial0/1	10.2.3.9	YES	manual	up	up

- A.The LAN interfaces are configured on different subnets.
- B.Interface FastEthernet 0/0 is configured as a trunk.
- C.The Layer 2 protocol of interface Serial 0/1 is NOT operational.
- D.The router is a modular router with five FastEthernet interfaces.
- E.Interface FastEthernet 0/0 is administratively deactivated.

Correct:B

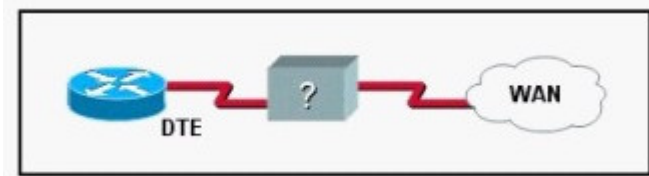
10.Refer to the graphic. It has been decided that Workstation 1 should be denied access to Server1. Which of the following commands are required to prevent only Workstation 1 from accessing Server1 while allowing all other traffic to flow normally? (Choose two.)



- A.RouterA(config)# interface fa0/0 RouterA(config-if)# ip access-group 101 out
- B.RouterA(config)# interface fa0/0 RouterA(config-if)# ip access-group 101 in
- C.RouterA(config)# access-list 101 deny ip host 172.16.161.150 host 172.16.162.163 RouterA(config)# access-list 101 permit ip any any
- D.RouterA(config)# access-list 101 deny ip 172.16.161.150 0.0.0.255 172.16.162.163 0.0.0.0 RouterA(config)# access-list 101 permit ip any any

Correct: B C

11.Refer to the exhibit. Which two devices can be used to complete the connection between the WAN router at the customer site and the service provider? (Choose two.)



- A.CSU/DSU
- B.modem
- C.WAN switch
- D.ATM switch
- E.Frame Relay switch
- F.ISDN TA

Correct:A B

12.Drag Drop

Construct the command sequence to configure an IP address on an Ethernet interface. (Not all options are used.)

Lab# configure terminal	enter privileged EXEC mode
Lab(config-if)# ip address 192.168.3.3/24	enter global configuration mode
Lab(config-if)# ip address 10.8.26.0 255.255.248.0	enter interface configuration mode
Lab(config)# ip address 172.16.10.1 255.255.255.0	configure the interface IP address
Lab# interface fa0/0	enable the interface
Lab(config)# interface fa0/0	
Lab(config-if)# no shutdown	
Lab(config-if)# enable interface	
Lab# enable	
Lab> enable	

Correct:

Green choice10---->Yellow Choice1

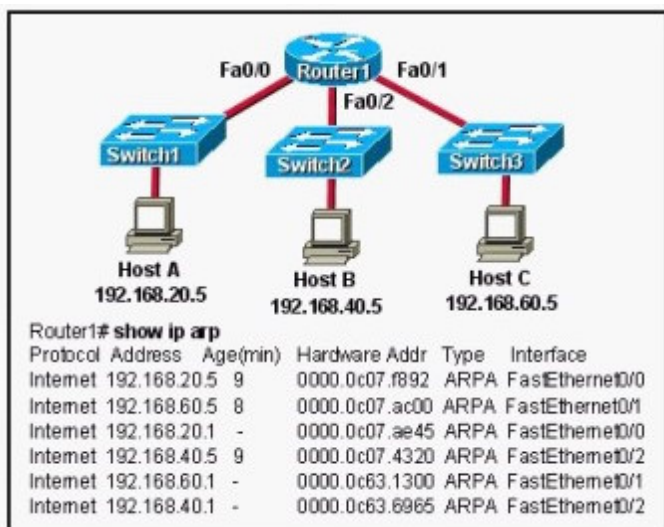
Green choice1---->Yellow Choice2

Green choice6---->Yellow Choice3

Green choice3---->Yellow Choice4

Green choice7---->Yellow Choice5

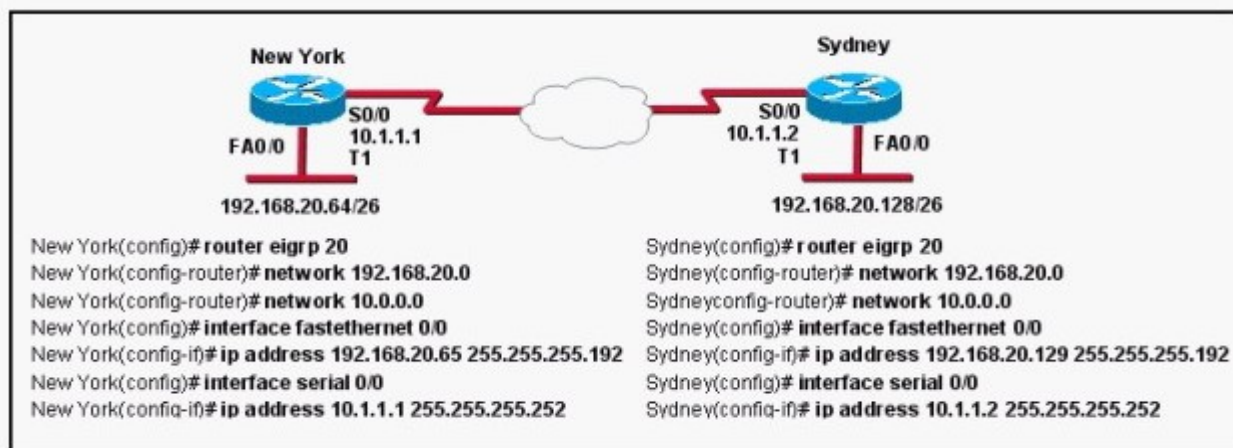
13.Refer to the exhibit. Host A is to send data to Host B. How will Router1 handle the data frame received from Host A? (Choose three.)



- A.Router1 will strip off the source MAC address and replace it with the MAC address on the forwarding FastEthernet interface.
- B.Router1 will strip off the source IP address and replace it with the IP address on the forwarding FastEthernet interface.
- C.Router1 will strip off the destination MAC address and replace it with the MAC address of Host B.
- D.Router1 will strip off the destination IP address and replace it with the IP address of Host B.
- E.Router1 will forward the data frame out interface FastEthernet0/1.
- F.Router1 will forward the data frame out interface FastEthernet0/2.

Correct:A C F

14.Why has the network shown in the exhibit failed to converge?



- A.The no auto-summary command needs to be applied to the routers.
- B.The network numbers have not been properly configured on the routers.
- C.The subnet masks for the network numbers have not been properly configured.
- D.The autonomous system number has not been properly configured.
- E.The bandwidth values have not been properly configured on the serial interfaces.

Correct:A

15.Refer to the partial command output shown. Which two statements are correct regarding the router hardware? (Choose two.)

```

system image file is "flash:c2600-do3s-mz.120-5.T1"

cisco 2621 (MPC860) processor (revision 0x600) with 53248K/12288K
bytes of memory

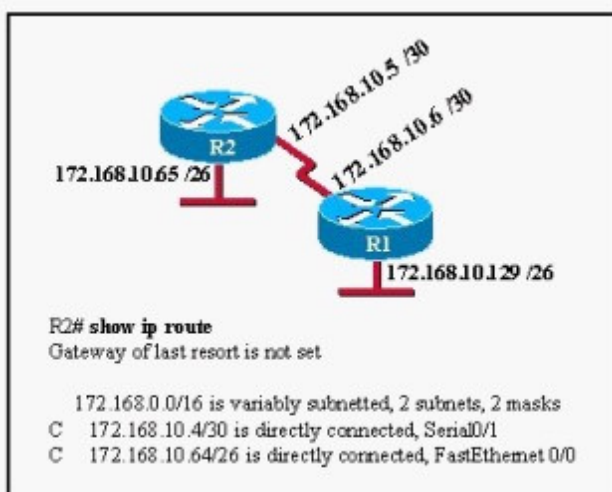
Processor board ID JAD05280307 (3536592999)
M860 processor: part number 0, mask 49
Bridging software.
X.25 software, Version 3.0.0.
2 FastEthernet/IEEE 802.3 interface(s)
2 Serial(sync/async) network interface(s)
2 Low-speed serial(sync/async) network interface(s)
16 terminal line(s)

32K bytes of non-volatile configuration memory.
16384K bytes of processor board System flash (Read/write)
    
```

- A.Total RAM size is 32 KB.
- B.Total RAM size is 16384 KB (16 MB).
- C.Total RAM size is 65536 KB (64 MB).
- D.Flash size is 32 KB.
- E.Flash size is 16384 KB (16 MB).
- F.Flash size is 65536 KB (64 MB).

Correct:C E

16.Refer to the exhibit. R1 can ping across the serial link to 172.168.10.5, but cannot ping the FastEthernet interface of R2 (172.168.10.65). The routing protocol being used is EIGRP, and the routing table of R2 is shown. Which two statements could causes of this problem? (Choose two.)



- A.The serial interface does not have the clockrate set.
- B.EIGRP is not enabled on one of the routers.
- C.The IP addressing scheme has overlapping subnetworks.
- D.The IP addressing scheme is using subnet zero but the ip subnet-zero command has not been enabled on one or both of the routers.
- E.The FastEthernet interface of R2 is administratively shutdown.
- F.The EIGRP autonomous system numbers configured on the two routers do not match.

Correct:B F

17.If all OSPF routers in a single area are configured with the same priority value, what value does a router use for the OSPF router ID in the absence of a loopback interface?

- A.the IP address of the first Fast Ethernet interface
- B.the IP address of the console management interface
- C.the highest IP address among its active interfaces
- D.the lowest IP address among its active interfaces
- E.the priority value until a loopback interface is configured

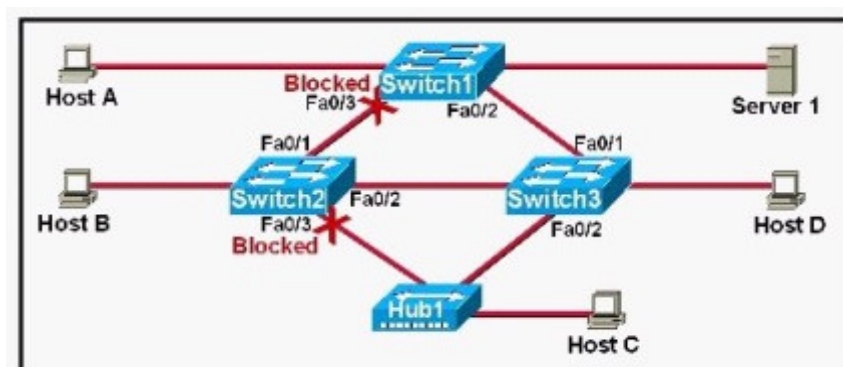
Correct:C

18.To configure the VLAN trunking protocol to communicate VLAN information between two switches, what two requirements must be met? (Choose two.)

- A.Each end of the trunk line must be set to IEEE 802.1E encapsulation.
- B.The VTP management domain name of both switches must be set the same.
- C.All ports on both the switches must be set as access ports.
- D.One of the two switches must be configured as a VTP server.
- E.A rollover cable is required to connect the two switches together.
- F.A router must be used to forward VTP traffic between VLANs.

Correct:B D

19.Assuming only one VLAN in the exhibit, which switch is acting as the root bridge?



- A.Switch1
- B.Switch2
- C.Switch3
- D.A root bridge is not required in this network.

Correct:C

20.If an ethernet port on a router was assigned an IP address of 172.16.112.1/20, what is the maximum number of hosts allowed on this subnet?

- A.1024
- B.2046
- C.4094
- D.4096
- E.8190

Correct:C